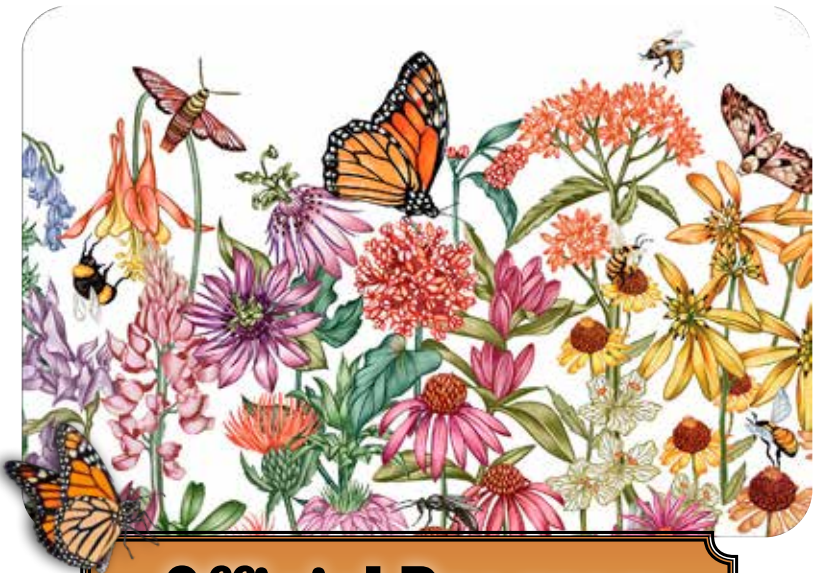


S I N C E 1 8 7 7



CHESTER FAIR

Fri. Night Aug. 28- Sun. Night Aug. 30, 2026



**Official Program
& Premium List**



www.chesterfair.org



CHESTER FAIR



Since 1877

Chester Agricultural and Mechanical Society FAIR

Middlesex Turnpike
CHESTER FAIR GROUNDS, CHESTER, CT
(860) 526-5947

FRIDAY NIGHT – SATURDAY – SUNDAY

AUGUST 28, 29, 30, 2026

ADMISSION: \$10.00

Children 12 and under – FREE

Senior Citizens and Military w/ID - \$8.00

Friday, Saturday & Sunday

3 Day Pass - \$25.00

~ FREE PARKING ~



www.chesterfair.org



**NO PETS OR FIREAMS
ARE ALLOWED ON THE GROUNDS**



WELCOME

Once again, we are delighted to welcome you back to the Chester Fair. This year's theme celebrates one of the most essential forces in our ecosystem: pollinators. From insects to wildlife, these remarkable helpers make possible the seeds, fruits, and vegetables that sustain us. Be sure to join us at Saturday's Educational Workshop, where noted speaker Marjorie Meekhoff will share her expertise on the vital role pollinators play in our world.

Looking for what's new at the fair? We're excited to introduce the Good Olde Fair Olympics—this year with a Colonial twist. Cheer on teams of four as they compete in classic contests inspired by the spirit of the Revolution. Our patriotic theme continues with a special presentation on Colonial Farming in the Agricultural Heritage Building. And of course, we're thrilled to debut one of the most talked-about additions to the fair: Chicken Poop Bingo.

Many beloved traditions are also returning. The Women's Fry Pan Toss, the Baby Crawling Contest, and the Frog Jumping Competition are back. This year also marks the fifth anniversary of our ZeroWaste Program. The Chester Fair is proud to be only the second traditional country fair in the United States to implement such a program. Did you know that last year, we diverted 75% of our waste from the landfill- and with new practices in place, we're aiming even higher.

Whatever brings you back—new attractions, old favorites, or simply the joy of gathering as a community, we very much appreciate you joining us. Here's to our nation's 250th anniversary and to another wonderful year at the Chester Fair.

Educational Workshop
POLLINATORS & THE IMPORTANCE
OF NATIVE PLANTS

Saturday 8/29/26

9:30 - 11 a.m. in the Special Events Tent

We are delighted to welcome **Marjorie Meekhoff** as this year's workshop speaker. A graduate of Skidmore College and a certified Master Gardener, Marjorie is the founder of **Pollinator Pathway East Lyme (PPEL)**. PPEL's mission is to create sustainable, pollinator-friendly habitats with a strong focus on the use of native plants.

Join us as Marjorie shares best practices for supporting the environment, promoting the health of local pollinators, and creating sustainable natural habitats right in your own backyard.

TABLE OF CONTENTS

Entertainment	4
Program	5
Family Activities.....	6
Agriculture Heritage Building	6
CLASS A - Cattle	14
CLASS B - Drawing Contests.....	18
CLASS C - Sheep, Goats and Swine	20
CLASS D-1 Poultry	26
CLASS D-2 Rabbits.....	27
CLASS E - Fruits	28
CLASS F - Vegetable Arrangements	29
CLASS G1 - Vegetables.....	29
CLASS H - Hobbies	30
CLASS I - Floriculture	32
CLASS J - Canned Goods and Farm Products	36
CLASS K - Cookery	37
2026 State Baking Contests	9
CLASS L - Needlework.....	41
2026 State Quilt Contest.....	7
CLASS P - Photography	43
2026 State Photography Contest	see website www.CTAgFairs.org
CLASS Q - Antique Tractor Pull	45
Rules and Regulations	46
Registration Entry Blanks.....	49
Board of Directors.....	Inside back cover

Scholarship information available on website

See website for additional information and updates

www.chesterfair.org

ENTERTAINMENT

~ FRIDAY, AUGUST 28th ~

6:45 p.m. – 10:45 p.m.

GREEN HILL

90's rock meets jam band spontaneity. We play the hits, then rewrite the rules

~ SATURDAY, AUGUST 29th ~

12:00 p.m. – 3:00 p.m.

THE SHORELINE CONNECTION

Playing crowd-pleasing hits from the 1960's to 1990's
around the shoreline for 26 years

3:45 p.m. – 6:45 p.m.

THE MICK LOUIS BAND

The Mick Louis Band is CT's Best 4 Piece Country Rock Group from Central CT!

7:45 p.m. – 10:30 p.m.

PLASTERCADE

Bringing the best ultimate rock experience to stages across the tri-state area

~ SUNDAY, AUGUST 30th ~

1:00 p.m. – 4:00 p.m.

SHINY METAL HINEYS

An acoustic Progressive Bluegrass Band from Deep River that plays original,
traditional and unique cover songs

4:00 – 5:00 p.m.

CHESTER DRUM CORPS

A favorite annual tradition not to be missed!

Subject to change

CHESTER FAIR PROGRAM

THURSDAY EVENING, AUGUST 27, 2026

6:00 - 8:30 p.m. Registration and Entry of articles for Classes:
E,F,G,H,I,J,K,L and P

FRIDAY EVENING, AUGUST 28, 2026

6:00 p.m. Gate and Midway Opens
6:00-9:00 p.m. Arrival of Animals
6:00 p.m. Antique Tractor Pull (mph transfer sled)
7:00 p.m. Good Olde Olympics (Pulling Ring)
8:30 p.m. Women's Frying Pan Toss (Pulling Ring)
10:00 p.m. Building #2 closes
11:00 p.m. Gate Closes

SATURDAY, AUGUST 29, 2026

8:00 a.m. Gate Opens
8:00 a.m. Livestock Judging
9:00 a.m. Dairy Judging
9:00 a.m. - 3:30 p.m. Cattle Drawing – 2400 lbs. and under
Cattle Drawing – 2800 lbs. and under
Cattle Drawing – 3200 lbs. and under
Cattle Drawing – 3200 lbs. and over
9:30-11:00 a.m. **Pollinators & the Importance of Native
Plants - Special Events Tent**
10:00 a.m. Midway Opens
3:00 p.m. Antique Tractor Pull Stone boat
5:00 p.m. Pony Drawing - 46" and under
Pony Drawing - 50" and under
10:00 p.m. Building #2 closes
11:00 p.m. Gate Closes

SUNDAY, AUGUST 30, 2026

9:00 a.m. Gate and Midway Opens
9:00 a.m. Beef Judging
9:00 a.m.-1 p.m. NEW THIS YEAR: Wood Chopping
Competition (Tractor Pull Track)
11:00 a.m. Horse Drawing – 3225 lbs. and under
Horse Drawing – 3425 lbs. and under
Horse Drawing – Free for All
6:00 p.m. Gate and Midway Close

Subject to change

FAMILY ACTIVITIES

FRIDAY EVENING, AUGUST 28, 2026

7:00 p.m.	Good Olde Olympics (Pulling Ring)
8:30 p.m.	Women's Frying Pan Toss (Pulling Ring)

SATURDAY, AUGUST 29, 2026

9:00 a.m.-4:00 p.m.	Meigs Point Nature Center Exhibit
11:00 a.m.-3:00 p.m.	Twisty Bros. Balloon Art
11:00 a.m.	Baby Crawl Race
1:00-1:15 p.m.	Frog Jumping Contest - Age 15 & under (BYOF)
1:15-1:30 p.m.	Frog Jumping Contest - Age 16 & over (BYOF)
2:30-4:30 p.m.	Justine Nicole Entertainment - Hula Hoops for all ages

SUNDAY, AUGUST 30, 2026

9:00 a.m.-4:00 p.m.	Meigs Point Nature Center Exhibit
10:30 a.m.	Chicken Poop Bingo (Poultry Barn)
11:00 a.m.	Baby Crawl Race (Special Events tent)
11:00 a.m.-3:00 p.m.	Twisty Bros. Balloon Art
12:00-2:00 p.m.	Curious Creatures
1:00 p.m.	Children's Pedal Tractor Pull (Main Gate)

Subject to change without notice

AGRICULTURAL HERITAGE BUILDING

FRIDAY, AUGUST 28

Fiddle Music 7-9 p.m.

SATURDAY AUGUST 29

Rope Making Demo - 1:00, 3:00, 5:00 p.m.

Fiddle Music - 7-9 p.m.

SUNDAY, AUGUST 30

Colonial Farming Talk - 2:00 p.m.

Fiddle Music 3-5 p.m.

Drop by throughout the weekend for pop-up demonstrations

ASSOCIATION OF CONNECTICUT FAIRS QUILT CONTEST

Sponsored by The Association of Connecticut Fairs, Inc. and the Durham Agricultural Fair Association, Inc., “The Durham Fair”

RULES OF CONTEST

WHO MAY ENTER: The Contest is open to all residents of Connecticut.

HOW TO ENTER: Enter a quilt (or for Next Generation Quilters, a quilted item) at any participating fair that is a member of the Association of Connecticut Fairs in any of the categories mentioned below. The participating fair will award one winner in each category with a rosette from the Association of Connecticut Fairs along with any awards the local fair provides. Each fair will submit that winning entry to the state contest. A quilt can be entered in as many fairs as a contestant wishes until it becomes eligible to go to the state contest. Please note an Exhibitor can only represent 1 Quilt or wall hanging per Category at the State Quilt Contest in November.

JUDGING: The Association of Connecticut Fairs will furnish judges score sheets to each fair. The contestants will receive these sheets at the end of the contest. Go to www.ctagfairs.org for judging criteria. Decisions of the judges are final.

LOCAL CONTEST: The winner of the Quilt Contest will receive a blue ribbon from the Association of Connecticut Fairs and will become eligible to submit their entry to the state contest. In the event a fair only receives one entry in the contest and that entry is worthy of first prize, the Association rosette must be awarded to that entry.

STATE CONTEST: See www.ctagfairs.org for information.

CATEGORIES:

- Hand or machine appliqué and quilted any way by Exhibitor
- Pieced and Machine quilted by Exhibitor
- Pieced and Hand quilted by Exhibitor
- Any method quilted by a Group (two or more)

Ribbons sponsored by the Durham Fair

ADULT QUILT CONTEST RULES:

1. Group quilt can be pieced by one individual and quilted by another.
2. All work must be completed by an individual quilt maker.
3. Work can be pieced or appliqué by hand or by machine.
4. Quilts must be either hand or machine (domestic, hand-guided longer or digital) quilted - no hand tied quilts.
5. Quilts may not be made from pre-cut quilt kits.
6. Applique quilts must consist of at least 50% applique.

7. Quilt perimeter must measure a minimum of 216 inches.
8. A quilt can only complete in the Association of Connecticut Fairs Quilt Contest once at the state contest in the fall. It can be entered in more than one local fair until it is selected to compete at the state level. An exhibitor can only represent 1 quilt per category at the State Quilt Contest.

SEE STATE WEBSITE for more details and judging criteria: www.CTAGFairs.org

Note: The Chester Fair will pay for the winning contestant's dinner at the Fair Association's Spring/Fall Meeting.

The following prizes will be awarded at the State Meeting in each category:

1st Prize: \$50.00

2nd Prize: \$35.00

3rd Prize: \$15.00

Peoples Choice: \$50.00

Each attendee of the Banquet will be able to cast one vote for their favorite quilt regardless of category.

NEXT GENERATION QUILTER (formerly Junior) QUILT CONTEST:

Possible entries include but are not limited to: quilts (any size), pillows, wall hangings, Christmas tree skirts, placemats, articles of clothing, bags or table runners

NEXT GENERATION QUILTER CONTEST RULES:

1. All work must be completed by an individual quilt maker.
2. Work can be pieced by hand or by machine.
3. Items must be either hand or machine (domestic, hand-guided longer or digital) quilted - no hand tied quilts.
4. While there is no specific size (dimension) requirement, items will be judged based on appropriate techniques used.
5. Quilts may not be made from pre-cut quilt kits.
6. An item can only compete in the Association of Connecticut Fairs Quilt Contest once at the state level contest in the fall. It can be entered in more than one local fair until it is selected to compete at the state level. An exhibitor can only represent 1 item at the State Quilt Contest.
7. Participant must be between 7 and 18 years of age at the time of judging.

SEE STATE WEBSITE for more details and judging criteria: www.CTAGFairs.org

The following prizes will be awarded at the Spring Meeting in each category:

1st Prize: \$25.00

2nd Prize: \$15.00

2026 STATE BAKING CONTESTS

Sponsored by the Association of Connecticut Fairs, Inc.

RULES OF THE CONTEST

WHO MAY ENTER: The contest at each participating member fair is open to all men, women and juniors. Bakers do not need to be Connecticut residents to compete. Commercial, industrial or professional bakers are not eligible to enter.

Divisions: Juniors (ages 7 to 15 as of July 1st) and Adult.

HOW TO ENTER: All men, women or juniors entering a contest at any participating member fair are automatically entered and competing in the local contest. Contestants may enter the contest at as many fairs as they wish until they win first prize. They will then represent that fair at the state baking contest. Please submit entries to both the local and state contest **on disposable plates**. The Association of Connecticut Fairs and the local fairs are not responsible for the return of plates, trays or containers.

JUDGING: Judging will be based on appearance, flavor and texture, as noted for each contest. The Association of Connecticut Fairs will furnish judges' score sheets to each fair and the contestant will receive these sheets at the end of the contest. **Additions, deletions or substitutions in the recipe are not permitted and will result in disqualification.** All decisions of the judges are final.

LOCAL CONTEST: The winner of the local Baking Contest will receive a blue ribbon from the Association of Connecticut Fairs and will then become eligible to submit their entry at the state contest. In the event that only one entry is received at the local contest and that entry is worthy of first prize, that entry must be awarded the first place ribbon.

STATE CONTEST: See www.ctagfairs.org for more details.

Note: The Chester Fair will pay for the winning contestants' dinners at the Fair Association's Spring/Fall meeting.



ADULT CONTEST RECIPE

Lemon Bliss Cake

Prep: 20 minutes

Bake: 45 mins to 1 hour

Total: 1 hour 20 mins

Yield: one Bundt cake



INGREDIENTS

Cake

16 tablespoons unsalted butter, at room temperature, at least 65°F

2 cups granulated sugar

1 teaspoon table salt

4 large eggs, at room temperature

2 teaspoons baking powder

3 cups King Arthur Unbleached

All-Purpose Flour

1 cup whole milk, at room temperature

Zest of 2 medium lemons

Glaze

1/3 cup freshly squeezed lemon juice, the juice of about 2 medium size juicy lemons

3/4 cup granulated sugar

Icing

1 1/2 cups confectioners' sugar, sifted

Pinch of table salt

2 to 3 tablespoons freshly squeezed lemon juice

DIRECTIONS

1. Preheat the oven to 350°F.
2. Beat together the butter, sugar, and salt, first until combined, then until fluffy and lightened in color.
3. Add the eggs one at a time, beating well after each addition. Scrape the sides and bottom of the bowl once all the eggs have been added and beat briefly to re-combine any residue.
4. Measure the flour by gently spooning it into a cup, then sweeping off any excess. Whisk the baking powder into the flour. Add the flour mixture to the batter in three parts alternately with the milk, starting and ending with the flour. The batter may look slightly curdled when you add the milk. That's OK; it'll smooth out as you add the flour. Mix until everything is well combined; the batter will look a bit rough but shouldn't have any large lumps. Stir in the zest.
5. Thoroughly grease a 12-cup Bundt pan of your choice. Spoon the batter into the prepared pan, leveling and smoothing the top with a spatula.
6. Bake the cake for 45 to 60 minutes, or until a cake tester or toothpick inserted into the center comes out clean. A pan with a dark interior will bake cake more quickly; start checking at 40 minutes.
7. While the cake is baking, make the glaze by stirring together the lemon juice and sugar. Microwave or heat over a burner briefly, stirring to dissolve the sugar. You don't want to cook the lemon juice, so microwave just until very warm, but not uncomfortably hot — less than 1 minute should do it. Set the glaze aside.

8. Remove the cake from the oven and carefully run a knife between cake and pan all around the edge. Place the pan upside down on a cooling rack. If the cake drops out of the pan onto the rack, remove the pan. If the cake doesn't drop onto the rack, let it rest for 5 minutes, then carefully lift the pan off the cake. If the cake still feels like it's sticking, give it another 5 minutes upside down, then very gently shake the pan back and forth to loosen and remove it.
9. Brush the glaze all over the hot cake, both top and sides. Let it sink in, then brush on more glaze, continuing until all the glaze is used up.
10. Allow the cake to cool completely before icing.
11. To ice the cake, mix the sugar and salt, then mix in 2-3 tablespoons of the lemon juice, adding just enough additional juice to create a thick glaze, one that's just barely pourable. Drizzle it artfully over the completely cool cake.

Submit on foil-covered cardboard measured no more than one inch from sides of the cake.

Judging Criteria

Overall Appearance	25 points	Flavor	40 points
Following Directions	10 points	Aroma	<u>10 points</u>
Texture	15 points	Total	100 points

The following prizes will be awarded at the **State** contest in November

1st Place: \$40.00	4th Place: \$25.00	7th Place: \$10.00
2nd Place: \$35.00	5th Place: \$15.00	8th Place: \$7.50
3rd Place: \$30.00	6th Place: \$12.50	9th Place: \$5.00
		10th Place: \$5.00

Honorable Mention Ribbons will also be awarded.

King Arthur Flour is sponsoring ribbons and prizes at the Annual State Contest held in November.

JUNIOR CONTEST RECIPE

S'more Granola Bar

Prep: 15 minutes
 Bake: 26 to 37 mins Total: 1 hour
 Yield: sixteen 2 1/4" squares



INGREDIENTS

6 tablespoons unsalted butter	1/2 teaspoon table salt
1/2 cup light brown sugar, packed	1 cup graham cracker crumbs, from about 6 to 7 whole graham crackers
6 tablespoons maple syrup	1/2 teaspoon cinnamon
2 1/4 cup old-fashioned rolled oats	1 1/2 cups semisweet chocolate chips
1/2 cup King Arthur Unbleached All-Purpose Flour	3 1/2 cups mini marshmallows

DIRECTIONS

1. Lightly grease with butter, a 9-inch square pan.
2. Place a rack in the top third of the oven.
3. Preheat the oven to 350°F.
4. In a medium saucepan set over medium heat, melt and stir together the butter, brown sugar, and syrup, cooking until the sugar has dissolved.
5. Stir in the oats, flour, salt, graham cracker crumbs, and cinnamon.
6. Press about 3/4 of the mixture evenly into the prepared pan. Reserve a generous cup for the topping.
7. Bake the crust for 15 to 20 minutes.
8. Remove the crust from the oven and sprinkle the chocolate chips evenly over the hot crust. Wait 5 minutes, then spread the melted chocolate evenly over the crust.
9. Sprinkle the marshmallows over the chocolate, then top the marshmallows with the remaining crust mixture; this is the topping.
10. Bake for 10 to 15 minutes, until the marshmallows are puffed.
11. Turn the oven to broil and broil the bars for 1 to 2 minutes until the marshmallows are toasted to your liking. This happens quickly, so be sure to keep a close eye on the bars to prevent them from burning.
12. Turn off the oven/broiler. Remove the bars from the oven and cool completely on a wire rack (in the pan) before cutting.

Submit 6 bars on a 9-inch white paper plate.

Judging Criteria

Overall Appearance	25 points	Flavor	40 points
Following Directions	10 points	Aroma	<u>10 points</u>
Texture	15 points	Total	100 points

The following prizes are awarded at the **State** contest held in November:

1st Place	\$20.00 & Rosette	6th Place	\$5.00 & Rosette
2nd Place	\$15.00 & Rosette	7th Place	\$5.00 & Rosette
3rd Place	\$10.00 & Rosette	8th Place	\$5.00 & Rosette
4th Place	\$7.50 & Rosette	9th Place:	\$2.50 & Rosette
5th Place	\$5.00 & Rosette	10th Place:	\$2.50 & Rosette

Honorable Mention Ribbons will also be awarded.

King Arthur Flour is sponsoring ribbons and prizes at the Annual State Contest held in November.



2026 STATE TWO-CRUSTED APPLE PIE CONTEST

CONTEST RULES

1. Each pie must be a 9" (measured at the top inside edge of the dish).
TWO CRUSTED PIE - NO LATTICE-TOP PIES.
2. Include the recipe, your name and address. Recipe is for judging only.
3. No pre-made or mixes are allowed.
4. Main ingredient must be apples. However, pies may include other fruits or ingredients.
5. Pies become the property of the Association of Connecticut Fairs (baking dishes will not be returned).
6. Failure to adhere to these rules will **disqualify** the entered pie from the competition.

WHO MAY ENTER: The contest at each fair is open to all men, women, or juniors. If entered by juniors they will be considered adults. Commercial, Industrial or Professional Bakers, Home Economists or anyone **selling bakery products are not eligible to enter.**

HOW TO ENTER: Anyone entering the Apple Pie Contest at any fair belonging to the Association of Connecticut Fairs is automatically competing in the local contest. Contestants may enter the contest in as many fairs as they wish UNTIL THEY WIN FIRST PRIZE. They then will represent that fair in the state contest. Contestants will be subject to entry rules at the local fairs.

JUDGING CRITERIA:

Overall Appearance	40	Crust	10
Flavor	40	Texture	10

The following prizes plus a rosette will be awarded at the annual state contest held in November 2025. Honorable Mention Ribbons will also be awarded.

1st Place: \$40.00	4th Place: \$25.00	8th Place: \$7.50
2nd Place: \$35.00	5th Place: \$15.00	9th Place: \$5.00
3rd Place: \$30.00	6th Place: \$12.50	10th Place: \$5.00
	7th Place: \$10.00	

See State Fair website for more details: www.CTAgFairs.org

Bishops Orchards is sponsoring by awarding gift cards for 1st, 2nd, 3rd place at the Annual State Contest in November.

King Arthur Flour is sponsoring ribbons and prizes at the Annual State Contest in November.

CLASS A – CATTLE

Mail Pre-registration forms and entry fee to:

Beth DeRosa Linsley, Supt. or Colleen Augur, Assist. Supt., Chester Fair, P.O. Box 646, Chester, CT 06412. Postmark after July 15th. Email: elizabeth.derosalinsley@ynhh.org

The State of Connecticut Department of Agriculture has made SEVERAL changes to the 2026 Connecticut Fair and Show Requirements. Exhibitors will be responsible for educating themselves about these changes and following the recommendations. See Page 46 for more info.

Note: Health charts from the Commissioner of Agriculture required for all cattle entries. Recommendations of Committee on Fairs as adopted by the Connecticut Purebred Dairy Cattle Association:

1. All cattle must have a health certificate issued within 60 days of their first show from an accredited veterinarian stating that the animal is in good health and not showing signs of infectious, contagious and/or communicable diseases. All exhibitors must send a copy of health chart to superintendent with entries. Copy will be returned after show.
2. All entries must originate from herds that meet the testing and health requirements of the State of Connecticut. State livestock inspectors may request proof of compliance with state requirements.
3. All animals must have permanent identification. (Tattoo, ear tag, or microchip plus a reader.)
4. **ALL ANIMALS MUST HAVE RABIES VACCINATION AT LEAST 30 DAYS BEFORE FAIR.**
5. **Out of state cattle:** All cattle over 3 months of age must have a negative TB test within 12 months prior to show date. Cattle under 3 months of age may go on the dam's TB test chart if the dam was tested for TB within the past 12 months and a copy of the results provided. All brucellosis vaccinated female cattle over 18 months of age and all bulls and non-vaccinated female cattle 6 months of age and older shall have a negative Brucellosis test within 12 months prior to their first show date. Steers and spayed heifers are exempt from brucella testing. Animals must be accompanied by a health certificate and test charts approved by the appropriate animal health official in the state of origin.
6. Registration or lease papers will be required for **all** animals except crossbred beef.
7. A **minimum** amount of bedding will be provided.
8. Space will be reserved on a first come basis.
9. An entry fee of \$2.00 per animal to be mailed with entry.
10. Livestock exhibitors planning to use the wash rack must provide their own hose with a shutoff nozzle.

11. No campers on the grounds prior to Wednesday before the fair.
12. **Animals may be removed after 4:30 p.m. Sunday.**
13. There will be a limit of two entries per class.
14. Showmanship age is as of January 1st.
15. Limit of 8 animals per family/farm/club.
16. Junior premiums will be paid for Breed Classes only. Group classes are exempt from Junior premiums.

No. 1 – DAIRY CATTLE

Standard Classification for Country Fairs as Recommended by the
Purebred Dairy Cattle Association of Connecticut.

Recognized Breeds to be judged: Ayrshire, Brown Swiss, Guernsey, Holstein,
Jersey, Milking Shorthorn and Lineback

Dairy animals under four (4) months of age are NOT eligible for competition.

Prizes:	1st	2nd	3rd	4th	5th
	\$45	\$40	\$35	\$30	\$25

1. Spring Calf (March-May)
2. Winter Calf (December - February)
3. Fall Calf (September - November)
4. Summer Yearling (June - August)
5. Spring Yearling (March - May)
6. Winter Yearling (December - February)
7. Fall Yearling (September - November)

Junior Champion

Reserve Junior Champion

8. Cow - 2 Year Old
9. Cow - 3 Year Old
10. Cow - 4 Year Old
11. Cow - 5 years and over
12. Dry Cow
13. Best Udder - per breed

Senior Champion & Reserve Senior Champion

Grand Champion & Reserve Grand Champion

14. Best Three Females - any age, all bred and owned by exhibitor
15. Dairy Herd - to consist of 3 cows all to have calved at least once (one entry per exhibitor) - per breed
16. Get of Sire - to consist of 3 animals all sired by the same bull
17. Produce of Dam - 2 animals the produce of one cow
18. Dam and Daughter pair - one cow and one female offspring

* When splitting groups, the same animal cannot be used in two separate groups in the same class.

Supreme Champion & Reserve Supreme Champion Female

19. Club Herd - 5 Animals owned by at least 3 club members

Novice 11 & under 12 to 15 16 to 19

Juniors must enter showmanship to be eligible for Junior Show.

Club Herd.....Prizes will be sponsored

<p>AWARDS</p> <p>Special Award given in memory of E. Lea Marsh and Sylvia Marsh to the winner of Adult Showmanship...\$150</p> <p>Junior Showmanship ... \$150</p> <p>and Supreme Champion of the Open Dairy Show ... \$250</p> <hr/> <p>DAIRY & BEEF</p> <p><i>A Herdsman Award will be presented by the Chester Fair Association</i></p> <hr/> <p>Special Award given by Lauralin Farm \$250</p> <p>Supreme Champion of the Junior Show</p>
--

No. 2 – BEEF CATTLE

Recognized breeds to be judged: Angus, Hereford, Simmental, Crossbred and All Other Breeds. Animals 4 months and younger are eligible for group classes only.

Prizes:	1st	2nd	3rd	4th	5th
	\$45	\$40	\$35	\$30	\$25

1. Spring Calf (March-May)
2. Winter Calf (December - February)
3. Fall Calf (September - November)
4. Summer Yearling (June - August)
5. Spring Yearling (March - May)
6. Winter Yearling (December - February)
7. Fall Yearling (September - November)

Junior Champion & Reserve Junior Champion

8. Cow - 2 Year Old
9. Cow - 3 Year Old
10. Cow - 4 Year Old
11. Cow - 5 years and over

Senior Champion & Reserve Senior Champion

Grand Champion & Reserve Grand Champion

12. Best Three Females - any age, all bred and owned by exhibitor
13. Beef Herd - to consist of 3 cows all to have calved at least once (one entry per exhibitor)
14. Get of Sire - to consist of 3 animals all sired by the same bull
15. Produce of Dam - 2 animals the produce of one cow
16. Cow and Calf

* When splitting groups, the same animal cannot be used in two separate groups in the same class.

17. Supreme Champion & Reserve Supreme Champion Female Rosette

18. Club Herd - 5 Animals owned by at least 3 club members

No. 3 – MARKET BEEF

Prizes:	1st	2nd	3rd	4th	5th
	\$45	\$40	\$35	\$30	\$25

1. Light Weight
2. Medium Weight
3. Heavy Weight

Grand Champion and Reserve Champion Steer

Junior Exhibitors Must Enter Fitting and Showmanship to be eligible for Junior Premiums

No. 4 – SHOWMANSHIP CLASSES (Age as of January 1st)

Prizes:	Rosette	1st	2nd	3rd	4th	5th
		\$45	\$40	\$35	\$30	\$25

All non-placing Showmanship will receive \$5.00

Special Award given by Colleen Augur and Beth DeRosa to the winner of:

Adult & Youth Champion Beef Showmanship...\$150 each
Supreme Champion Open Beef Show ... \$250
Supreme Champion Junior Beef Show... \$250

Fitting and Showmanship Beef (Age as of January 1st)

Novice

Age 11 and Under

Age 12 through 15

Age 16 through 19

Champion Showman

Reserve Champion Showman

Over the Hill

Fitting and Showmanship Dairy (Age as of January 1st)

Novice

Age 11 and Under

Age 12 through 15

Age 16 through 19

Champion Showman

Reserve Champion Showman

Over the Hill - must exhibit animal



CLASS B – DRAWING CONTESTS

Horses and Cattle

Marc D'Orvilliers

The State of Connecticut Department of Agriculture has made SEVERAL changes to the 2026 Connecticut Fair and Show Requirements. Exhibitors will be responsible for educating themselves about these changes and following the recommendations. See page 46 for more info.

Rules for both Horses and Cattle:

1. **NO EXCESSIVE WHIPPING**
2. No person under the influence of liquor will be permitted to drive.
3. The required distance for a fair pull shall be at least 6 feet for cattle, and ponies and 12 feet draw for horses.
4. Oxen turning in yoke more than once shall be disqualified
5. No contrivance to be used for cattle other than conventional yoke.
6. Only contestants and officials allowed in ring.
7. Not more than 3 people per horse and pony team. Not more than 2 men per oxen team.
8. All contestants in drawing contest must be weighed on day of drawing on scales at the fair grounds. Scales open both days at 8 a.m. Check weighing for horses from **8 a.m. to 10 a.m.**
9. Unless otherwise specified all drawing contests will be in accordance with Eastern Draft Horse Association, Connecticut Draft Pony Association, and CT Ox Owners Association Rules and Regulations.
10. In accordance with Connecticut P.A. 73-312, all equine animals are required to be vaccinated for the control of Venezuelan equine encephalomyelitis and rabies. Horses are recommended to be vaccinated for EEE within 6 months of first show date.
11. **All horses must have a negative (AGID) Coggins test or ELISA test for Equine Infectious Anemia within 12 months prior to show date, and be accompanied by such certificate. It is highly recommended that horses be vaccinated against EEE and WNV within 6 months of their first show date.**
12. In the event that a class is not held, the Superintendent has the right to distribute premiums at his/her discretion.
13. **TYING ANIMALS TO THE FENCE IS STRICTLY PROHIBITED.**
14. **NO FACE LASHING OF DRAWING CATTLE.**

A \$20.00 Premium will be paid to each team pulling the initial load and not winning any prize money.

No. 1 – Cattle Drawing Contest

2400 lbs and under
2800 lbs. and under

3200 lbs. and under
3200 lbs. and over

Prizes:	1st	2nd	3rd	4th	5th	6th	7th	8th
	\$175	\$130	\$115	\$95	\$85	\$75	\$65	\$55

No. 2 –Pony Drawing Contest

Under 46 inch class

Under 50 inch class

Prizes:	1st	2nd	3rd	4th	5th	6th	7th	8th
	\$155	\$110	\$95	\$75	\$65	\$55	\$45	\$35

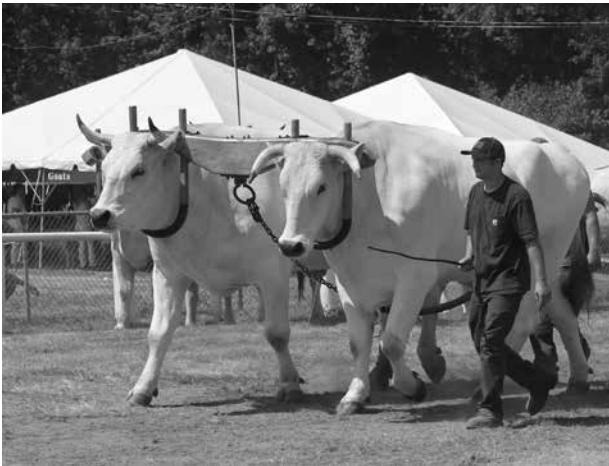
No. 3 – Horse Drawing Contest

3225 lbs. and under

3425 lbs. and under

Prizes:	1st	2nd	3rd	4th	5th	6th	7th	8th
	\$210	\$180	\$155	\$125	\$100	\$80	\$65	\$55

Free for All	\$225	\$150	\$125	\$105	\$80	\$60	\$45	\$35
--------------	-------	-------	-------	-------	------	------	------	------



CLASS C - SHEEP, GOATS AND SWINE

No. C-1 Sheep – Open Sheep Show

Mail entries to: Alison Trojanowski

Chester Fair, P.O. Box 646, Chester, CT 06412

Postmark after July 15th

The State of Connecticut Department of Agriculture has made SEVERAL changes to the 2026 Connecticut Fair and Show Requirements. Exhibitors will be responsible for educating themselves about these changes and following the recommendations. See page 46 for more info.

Please Include \$2.00 per head entry fee. Entries close when pens are full. PLEASE INCLUDE YOUR PHONE NUMBER. NO PHONE ENTRIES PLEASE.

Sheep Show starts promptly at 9:00 a.m. Saturday

All sheep must have official USDA-approved identification and be accompanied by health certificates issued by an accredited veterinarian within 60 days of their first show stating the sheep is in good health and not showing signs of infectious, contagious and/or communicable diseases and are not from scrapie-exposed flocks, and a rabies certificate over thirty days must be sent with entries. Animal tag number must be on entry form. ENTRIES LIMITED TO 20 SHEEP PER FARM OR FAMILY. Acceptance or rejection of sheep upon arrival will be left to the discretion of the Superintendent and/or health officials. ANY SHEEP, INCLUDING WOOL BREEDS, NOT PROPERLY CLEANED OR FITTED FOR SHOW WILL BE REJECTED AT THE DISCRETION OF THE SUPERINTENDENT.

One entry per exhibitor in group classes. Sheep must be entered in Junior or Senior departments not both. Two entries per exhibitor in any single class. Flocks will consist of a Ram, 2 Yearling Ewes, and 2 Ewe Lambs. Breeders Flock must be bred and owned by exhibitor. Limit 2 Market lambs. Market lambs should not have more than 1/2 inch of wool. Market lambs cannot have been shown in breed classes. Entries will be accepted between 5:00 p.m. and 9:00 p.m. on Friday. Release time is 5:00 p.m. Sunday. Any exhibitor showing 4 or more purebred sheep cannot enter grade sheep classes.

PEN DECORATING CLASS. Open to all exhibitors. Decorations must relate to farming and sheep, and be informative and original. No more than 2 pen spaces per exhibitor.

RULES AND REGULATIONS – All youths up to age 20 must show in youth show. All sheep must have an Official Health Certificate. Exhibitors are encouraged to practice good showmanship at all times.

DRESS CODE IS MANDATORY – (Optional for adults) White shirts, khaki, black, dark green or white trousers. Owner must show own animal in each class (if exhibitor has two animals, another youth may help him show). The superintendent reserves the right to reject any animal not in GOOD condition or not properly fitted for show. This will be RIGIDLY ENFORCED.

Prizes:	1st	2nd	3rd	4th
	\$16	\$15	\$12	\$10

Open Over 20 Class

1. Showmanship-Open over 20
2. Ram Lamb Sr.
3. Ram Lamb Jr.
4. Pair Ram Lamb
5. Aged Ewe
6. Yearling Ewe
7. Pair Ewe Yearling
8. Ewe Lambs-8A-Sr., 8B-Jr.
9. Pair Ewe Lambs
10. Exhibitors Flock
11. Breeders Young Flock
12. Get of Sire (4 of either sex)
13. Pen of 3 Lambs
14. Market Lambs Heavy/Light
15. Pair Market Lambs
16. Pen Decorating



OPEN GRAND CHAMPION SHEEPTROPHY
 OPEN RESERVE CHAMPION SHEEPROSETTE
 COSTUME CONTEST: All animals compete together in ONE CONTEST

Youth Sheep Show

Class

- 18. Showmanship Senior 16-20
- 19. Showmanship Junior 15 under
- 20. Showmanship Novice - 1st Year
- 21. Ram Lamb A Sr.
- 22. Ram Lamb Jr.
- 23. Pair Ram Lambs
- 24. Aged Ewe
- 25. Yearling Ewe
- 26. Pair Yearling Ewes
- 27A, Ewe Lamb, Sr.
- 27B, Ewe Lamb Jr.
- 28. Pair Ewe Lambs
- 29. Exhibitors Flock
- 30. Breeders Flock
- 31. Get of Sire (4 of either sex)
- 32. Pen of 3 Lambs
- 33. Market Lambs Heavy/light
- 34. Pair Market Lambs
- 35. Pen Decorating



YOUTH GRAND CHAMPION SHEEP..... TROPHY
YOUTH RESERVE CHAMPION SHEEPROSETTE
COSTUME CONTEST: All animals compete together in ONE CONTEST

C2 – Goats

Superintendents: Ashley Best and Lindsey Best

Entries will be accepted only in classes listed.

Entry Fee: \$2.00 per animal **to be mailed in with entry form and health papers**

Mail separate entries to:

Chester Fair, P.O. Box 646, Chester, CT 06412

Postmarked after July 15th

Entries positively close as soon as every pen is full

Owners are responsible for being present when their animals are being judged.

Each **recognized breed** will be judged separately.

Release time is 5:00 p.m., Sunday.

1. CT. Goats must have a USDA - approved identification and a health certificate issued within 60 days of their first show from an accredited veterinarian stating that the animals are in good health and not showing signs of infectious diseases and not from scrapie-exposed herds.
2. Individual papers proving goats age and identification must be available for superintendents as needed.
3. Entries will only be accepted for penning between 2 p.m. and 8 p.m. on Friday, and must remain on exhibit until Sunday at 5 p.m.
4. Goat Show starts promptly at 9 a.m. on Saturday.
5. Goat breeds being judged are as follows: Alpine, Fiber, LaMancha, Meat (Boar and Pygmy shown together), Nigerian Dwarf, Nubian, Oberhasli, Recorded Grade, Saanen, Toggenburg.
6. Junior and Senior Shows are judged separately, but simultaneously. Please indicate which show that goats are entering on entry form.
7. If an animal is being entered in the Junior Show, it must be shown by a youth exhibitor.
8. Ages of animals are determined as of date of show. Exhibitors age will be as of January 1, year of show.
9. All exhibitors need to be able to keep control of their goats while the goats are out of their pens. A correctly fit collar for each goat is necessary.
10. All exhibitors must wear show whites whenever animals are being shown.
11. Exhibitors must furnish own feed and hay; bedding will be provided. (Please make sure animals have an adequate hay feeder.)
12. No more than 12 goats per farm or family.
13. All exhibitors are responsible for keeping barn area neat and clean, and being present during fair hours. When you do any fitting or milking please be prompt at picking up.
14. Only displays deemed educational will be judged, but any farm displays, pen decorations, and other creative ideas to attract interest and educate the public about goats will be greatly appreciated.

GOAT CLASSES

Fitting and Showmanship		1st	2nd	3rd	4th
C1	4 and 5 years old	\$16	\$15	\$12	\$10
C2	6 to 10 years old	\$16	\$15	\$12	\$10
C3	11 to 14 years old	\$16	\$15	\$12	\$10
C4	15 to 18 years old	\$16	\$15	\$12	\$10
C5	19 years and up	\$16	\$15	\$12	\$10

Junior Doe Classes		1st	2nd	3rd	4th
G6	does born May1 to August1	\$16	\$15	\$12	\$10
G7	does born January1 to April1	\$16	\$15	\$12	\$10
G8	does born Sept1 to Dec1	\$16	\$15	\$12	\$10
G9	never freshen yearlings	\$16	\$15	\$12	\$10
One Champion and Reserve Champion awarded for each breed					
	Junior Champion		Rosette	\$15	
	Reserve Junior Champion		Rosette	\$10	
	Best Junior Doe in Show		Trophy	\$15	
Senior Doe Classes		1st	2nd	3rd	4th
G10	milker 1year old	\$16	\$15	\$12	\$10
G11	milker 2 and 3 years old	\$16	\$15	\$12	\$10
G12	milker 4 and 5 years old	\$16	\$15	\$12	\$10
G13	milker 6years and up	\$16	\$15	\$12	\$10
One Champion and Reserve Champion awarded for each breed					
	Senior Champion		Rosette	\$15	
	Reserve Senior Champion		Rosette	\$10	
	Best Senior Doe in Show		Trophy	\$15	
Group Classes		1st	2nd	3rd	4th
G14	dam & daughter (shown by breed)	\$16	\$15	\$12	\$10
G15	best 3 does (shown by breed)	\$16	\$15	\$12	\$10
G16	get of sire (3 does, all in milk, owned by 1 exhibitor, sire must be named)	\$16	\$15	\$12	\$10
G17	produce of dam (2 does, all in milk, owned by 1 exhibitor, dam must be named)	\$16	\$15	\$12	\$10
G18	farm herd (4 goats, any bred)	\$16	\$15	\$12	\$10
G19	pet goat*	\$16	\$15	\$12	\$10
G20	working goat*	\$16	\$15	\$12	\$10
•(classes are for wethers; enter each goat in one class or the other)					
G21	educational display	\$16	\$15	\$12	\$10

C3 – Swine

Superintendent: Allison Trojanowski

Chester Fair, PO Box 646, Chester, CT 06412

Entry Fee: \$2.00 per animal

Entries postmarked after July 15

Entries will be accepted between 6:00 p.m. and 8:00 p.m. on Friday. Release time is Sunday 5 p.m.

Swine must originate from Connecticut herds that are tested for Brucellosis and Pseudorabies on a yearly basis and can show on a health certificate issued within 60 days prior to the first show by an accredited veterinarian. If the swine are purchased from a tested herd, a bill of sale from the CT. producer must be presented to the state veterinarian's office before a Connecticut Exhibition Test card will be issued to the new owner. Swine show starts at approximately 1 p.m. Saturday. Wood shavings for pens will be provided.

Prizes:	1st	2nd	3rd	4th
	\$16	\$15	\$12	\$10

Division I: Registered (Papers are required or proof of pending registration must be presented). Each recognized breed competes separately.

- S1 Gilt 3 – 6 months
- S2 Gilt 6 – 12 months

Division II: Non-registered (no papers), all breeds and crossbreeds compete together.

- S3 Gilt 3 – 6 months
- S4 Gilt 6 – 12 months
- S5 Best gilt..... Trophy (only)

GROUP CLASSES: All swine compete together

Prizes:	1st	2nd	3rd	4th
	\$16	\$15	\$12	\$10

- S6 Feeder pig, under 120 lbs.
- S7 Lightweight market hog, 120- 180 lbs.
- S8 Heavyweight market hog, 180 lbs. and over
- S9 Novice Fitting & Show, first year showing any age
- S10 Jr. Fitting and Show, ages 13 and under
- S11 Sr. Fitting and Show, ages 14 to 18
- S12 Sow and Litter **1st: \$40 2nd: \$25 3rd: \$18 4th: \$10**
- S13 Open Fitting and Show, Ages 19 and older Rosette only
- S14 Best Showmanship..... Rosette only
- S15 Grand Champion market hog Trophy only
- Reserve Market hog..... Rosette only

COSTUME CONTEST: All species compete together

CLASS D-1 Poultry

Superintendent: Jake Cook 203-530-4721

Email: cookljake@gmail.com

Assistant Superintendent: Heddy Porto 475-227-1719, Committee: Kristen Tomblin Duffy

The State of Connecticut Department of Agriculture has made SEVERAL changes to the 2026 Connecticut Fair and Show Requirements. Exhibitors will be responsible for educating themselves about these changes and following the recommendations. See page 46 for more info.

*** Due to state restrictions waterfowl are not allowed to be shown in the 2026 fair season**

1. Entries must be sent to: Poultry Superintendent, Chester Fair, P.O. Box 646, Chester, CT 06412, postmarked after July 15. Include full payment.
2. Only birds six months and older will be accepted.
3. All birds must be inspected, identified and be accompanied by written proof (Connecticut Flock Test card or Connecticut Veterinary Medical Diagnostic Laboratory Report) that verifies that the breeding flock or the individual birds listed on the report were blood-test negative for *Salmonella pullorum* within 365 days of the show date. Concurrent Avian Influenza testing of the flock and/or individual birds is strongly recommended. **Doves and pigeons are exempt from testing requirements, but must be identified by leg bands or wing tags.** **Out of state poultry** (see cttagfair.org for rules). Any questions about what paperwork can be addressed by calling the state veterinarian's office 1-800-861-9939.
4. The poultry department will receive poultry between 3:00-8:00 pm on Friday. There is a \$1.00 entry fee for each entry in D-1. Money must accompany your entry to be accepted. Poultry will be cooped out at 5:30 Sunday. Entries close one week before fair.
5. Poultry classes consist of Large Fowl and Bantams in both Open and Junior categories. Entry forms must note the breed, sex (Cock, Hen, Cockerel, or Pullet) and class (Large fowl or Bantam) for each bird. Production birds limit 3 birds per family
6. Junior Department, to age 16. Same prize money and ribbons will prevail.

SPECIAL AWARDS

Junior Champion Overall \$20 donated by Cook Family

Champion Large Fowl Junior Exhibitor \$15 donated in memory of Dominic Porto by Heddy Porto

Showmanship - Ribbons will be awarded for 1st - 3rd

Advanced - Ages 16-20; Intermediate - Ages 15 and under; Novice - 1st year

Awards:	1st	2nd	3rd
	\$6	\$5	\$4

BEST DOZEN EGGS IN EGG CARTON. Eggs to be judged for uniformity of size, shape, and color. Please enter in **Class J Canned Goods and Farm Products.**

Awards:	1st	2nd	3rd
	\$4	\$3	\$2

COSTUME CONTEST: All species compete together
 “Best of Show” Trophies for Open and Junior Classes will be awarded.
 Rosettes will be awarded to Champion and Reserve Champion, Bantam, Large Fowl and Waterfowl in both open and junior divisions.

**Special Award given in memory of E. Lea Marsh and Sylvia Marsh
 to the Champion in the Open Show \$150**

CLASS D-2 Rabbits

Superintendent: Amy Wiknik 860-538-7559 email: wiknikamy@gmail.com
 Asst. Supt.: Trudy McClure, Committee: Nathan Howley

Pet Class: Open to all

Purebred Class: Open to all

The State of Connecticut Department of Agriculture has made SEVERAL changes to the 2026 Connecticut Fair and Show Requirements. Exhibitors will be responsible for educating themselves about these changes and following the recommendations. See page 46 for more info.

ALL ENTRIES MUST BE OWNED BY THEIR EXHIBITORS

1. Cage fee: \$1.00 per rabbit
2. Entries must be sent to: Rabbit Superintendent, Chester Fair, P.O. Box 646, Chester, CT 06412, postmarked after July 15. Include full payment.
3. Feed and water will be provided by the Fair.
4. A maximum of 25 rabbits per farm, family, owner or **until full.**
5. Animals who are sick, under 8 weeks of age or small enough to fit through the cages **will not** be accepted!
6. Only 2 **heavy** weighted bowls. No clip-on crocks, cans, water bottles or plastic bowls allowed.
7. Entries **must be** postmarked 1 week before the Fair.
8. Rabbit drop-off will be on Friday 8/28/26 from 2:30 to 5:00 pm. Judging will be held Friday at 5:30.
9. Rabbit pick-up will be Sunday 8/30/26 from 5:30-6:30 pm.
10. Owner must be present if selling rabbits.
11. No walk-ins accepted.

Premium Awards:	1st	2nd	3rd
	\$6	\$5	\$4

Trophies will be awarded for Best Pet and Best Purebred Rabbit and a Rosette for Best Reserve Pet in Show and Best Reserve Purebred in Show.

COSTUME CONTEST: All species compete together in ONE CONTEST

HORTICULTURE

General Comments

Certain rules are basic to exhibiting of all garden produce. You as an exhibitor should familiarize yourself with the terms “type”, “uniformity,” “maturity,” “freedom from damage,” and “cultural perfection.” These are the standard terms of all exhibitors and judges. **See our website for more information: www.chesterfair.org.**

All fruits and vegetables must be raised by the person in whose name they are entered.

CLASS E – Fruits

Superintendent: Sarah Pike
 35 Hoop Pole Road, Chester, CT 06412
 Telephone: 860-526-3391

Registration & Entries to arrive Thursday, August 27, 2026

Print variety name on entry tag.

Prizes:	1st	2nd	3rd
	\$5	\$3	\$2

- Best Collection in class by any one person
- Apples – any variety – 5 on a plate
- Pears – any variety – 5 on a plate
- Peaches – any variety – 5 on a plate
- Plums – any variety – 5 on a plate
- Quinces – any variety – 5 on a plate
- Grapes – any variety – 5 on a plate
- Berries – any variety – 10 on a plate
- Watermelon – one
- Other Melon – one each
- Other – any variety – 5 on a plate



CLASS F – Vegetable Arrangements

Three cash prizes – \$12.00, \$6.00 and \$3.00 will be awarded for the best vegetable arrangements.

The Chester Garden Club will be giving a \$25 Choice Award and Rosette to their favorite vegetable arrangement.

Judging will be based on the following:

Quality and Condition (50 pts.) • Arrangement (30 pts.)

Varieties – (20 pts.) Minimum 10 varieties

NOTES:

- Exhibitor must include a list identifying each vegetable variety
- Display may include appropriate container and decorative materials
- Display must be placed on tables provided
- Fair Association not responsible for display material

Registration & Entries to arrive Thursday, August 27, 2026

CLASS G1 – Vegetables

Superintendent: Sarah Pike

35 Hoop Pole Road, Chester, CT 06412

Telephone: 860-526-3391

Registration & Entries to arrive Thursday, August 27, 2026

Prizes: 1st 2nd 3rd
\$3 \$2 \$1

Please print variety name on entry tag

Beans, any variety, 10 pods

Beets, 4 (trim leaves to 1")

Broccoli, 1 head (in water)

Brussel sprouts, 5

Cabbage, 1 head

Carrots, 5 (trim leaves to 1")

Cauliflower, 1 head

Celery, 1 bunch

Corn, 4 ears (in husk)

Cucumbers, any variety, 3

Eggplant, 1

Garlic, 5 bulbs

Greens, Swiss chard, collard, turnip etc.
1 bunch

Herbs any variety, 3 stalks in small
container of water

Leeks, 3 bulbs

Lettuce, any variety, 1 head

Okra, 6

Onions, 4

Parsnips, 4

Peas, any variety, 10 pods

Peppers, sweet, 4

Peppers, hot, 4

Potato, 4

Pumpkin, 1

Radish, 5

Spinach, 1 bunch
Squash, summer, 2
Squash, winter, 2
Tomatoes, regular, any variety, 4

Tomatoes, cherry or other small
variety, 10
Turnips, 5
Other vegetables, 3

CLASS G2 – Vegetable Creation

Make your own creature using veggies and fruits.

Prizes:	1st	2nd	3rd	13 & under:	1st	2nd	3rd
	\$3	\$2	\$1		\$3	\$2	\$1

CLASS G3 – Junior Division Vegetables

Same description and prizes as G1.

Open to children through age 13

CLASS G4 – Scarecrow Contest

The maximum height of scarecrow is 7'. It can be hung on a stake provided by the fair, although you can make your scarecrow sitting in a chair. Bring your scarecrow assembled and ready to display. Your creation will be judged on creativity and originality. Community/civic organization and business participation is strongly encouraged.

Prizes:	1st	2nd	3rd
	\$20	\$15	\$10

14 and under:	\$20	\$15	\$10
----------------------	-------------	-------------	-------------

CLASS H – Hobbies

Superintendent: Paulette Heft

Email: threeakps@yahoo.com

Registration & Entries to arrive Thursday, August 27, 2026

NOTES:

- The Danish System of judging is used whereby each entry is judged on its own merit.
- The number of entries per exhibitor will be at the discretion of the Superintendent.
- **Articles previously exhibited at the Chester Fair will not be accepted.**
- Any entry, which requires hanging, must arrive ready to hang.
- **Exhibits cannot be removed until 6:00 p.m. Sunday.**
- Any exhibit must have been made by the person exhibiting it after September 1, 2025.

Basketry
 Ceramics
 Calligraphy
 Drawing: Pen and Ink
 Pencil Sketch
 Pastels
 Fabric: Tie Dye
 Stencil
 Fabric Painting
 Holiday Decorations
 Jewelry
 Leather Work
 Macramé
 Metal Work

Models
 Wood: Kit
 Original
 Painting: Watercolor
 Oil
 Acrylic
 Papercraft: Original stamped card
 Original Christmas card
 Miscellaneous papercraft
 Pottery
 Scrapbook
 Miscellaneous

CLASS H-1 Arts and Crafts

CLASS H-2 Collections

Any collection i.e. dolls, figurines, keys, shells, snow globes, tacky souvenir plates, etc. Cases will be assigned on a first come first served basis. Superintendents reserve the right to adjust display to accommodate all exhibitors.

CLASS H-3 – Clothing/Textiles/Needlework (Junior Only)

Any hand sewn or machine sewn article quilts, toys, samplers, etc.

Class H Senior Dept. is open to anyone 16 years of age or older

Senior Prizes: **1st** **2nd** **3rd**
 \$ 4 **\$3** **\$2**

Class H Junior Dept. is open to any child under 16 years of age
(Juniors must list age on registration form)

Junior Prizes: **1st** **2nd** **3rd**
 \$3 **\$2** **\$1**

- Judges Award and Best of Show rosettes will be awarded by judges in both Junior and Senior Depts.
- Superintendent Award Rosette to be awarded by Superintendent in both Junior and Senior Depts.
- **Age 4 and under receive participation ribbons only.**

ECO YOUTH ART AWARD
2026 Theme: Paper Mâché
 Create a work of art using 75% recycled materials. Art should be no bigger than 24".
Special Award given in memory of E. Lea Marsh and Sylvia Marsh
\$100.00

CLASS H-4 – Club Entries (Juniors only)

All Youth Organizations are welcome. These exhibits should teach some lesson, or show the value of some better practice in agriculture homemaking, nature, handicraft, etc. **Space will be provided if Superintendent is notified at least 3 days before the fair.**

Prizes:	1st	2nd	3rd
	\$5	\$3	\$2

SPECIAL CHESTER HISTORICAL SOCIETY AWARD

Any entry related to history, Chester or otherwise, will be eligible to win a \$25 award sponsored by The Chester Historical Society, Inc. This could be artwork, collection, etc. Two awards may be given, as well as Rosettes.

Consider incorporating a patriotic theme in honor of the USA's 250th celebration 1776-2026

CLASS I – Floriculture

Superintendent: Evelyn McKenna, Telephone 860-575-3461

Assistant Superintendent: Annie Burton, Telephone 860-526-3218

Also: Members of the Chester Garden Club

Registration & Entries to arrive Thursday, August 27, 2026

NOTES (Read Horticulture General Comments):

- The name and variety of each specimen should be on the entry card
- Entries will be judged for straight stems, clean foliage and fresh blooms
- Entries should be clean and free of insects and disease
- Containers are not the responsibility of the Fair Association.
- **Paper containers are unacceptable, use clear glass containers**
- Exhibitors allowed only one (1) entry in each category
- Exhibits cannot be removed until 6:00 p.m. Sunday
- All material in Class I-1, Class I-2 and Class I-5, (Junior specimens,) must have been grown by or in the possession of the exhibitor at least 3 months prior to date of the Fair.
- For arrangements in Class 1-3, Class 1-4 and Class 1-5B, plants on the following lists are prohibited:
 - Connecticut Invasive Plant List: <http://cipwg.uconn.edu/wp-content/uploads/sites/244/2014/12/CT-Invasive-Plant-List-2014Scientific-Name.pdf>
 - Endangered, threatened and special concern plants in CT: http://www.ct.gov/deep/cwp/view.asp?a=2702&q=323482&deepNav_GID=1628

- One Best of Show Rosette will be awarded in Classes I-1, I-2, I-3, and Class I-5.
- One Superintendent Rosette awarded in Class I-3, I-4, I-5 (combined)

THE CHESTER GARDEN CLUB WILL BE GIVING \$25 AND A ROSETTE.

CLASS I-1

A - Houseplants (No Annuals)

Prizes:	1st	2nd	3rd
	\$3	\$2	\$1

- | | |
|-------------------------------|---------------------------------------|
| African Violets | Hanging Foliage |
| Bonsai | Hanging Flowering (must be in flower) |
| Cactus | Orchids |
| Flowering (must be in flower) | Succulent |
| Foliage | Any other variety (list variety) |

B - Summer Plants (Annuals)

- Foliage (one variety per container)
- Flowering (one variety per container)
- Mixed Container (three or more different plants)

Tip: For best results, condition your flowers before arranging them. Cut the stem diagonally with a sharp knife and put them into lukewarm water immediately. Harvest the flowers in the morning or evening and give them a day to regain strength prior to arranging them.

CLASS I-2 Specimens: One Flower

Blooms should be disbudded, but do not remove foliage.

Prizes:	1st	2nd	3rd
	\$ 3	\$2	\$1

- | | | |
|----------------------|------------------|---|
| Ageratum | (Giant—over 8") | Salvia |
| Aster | Echinacea | Sedum |
| Bachelor Button | Gladiolus | Snapdragon |
| Begonia | Hydrangea | Strawflower |
| Buddleia | Lily | Sunflower on a stem |
| Calundula | Marigold | Verbena |
| Chrysanthemum | Monarda | Zinnia |
| Cleome | Nasturtium | (Small—up to 2") |
| Cockscomb | Phlox | (Medium—2" to 3") |
| Cosmos | Petunias | (Large—3" and up) |
| Dahlia | Roses | Any Other Variety (List name of flower) |
| (Small—less than 4") | Rose (Miniature) | |
| (Large—4" to 8") | Rudbeckia | |

CLASS I-3 – Arrangements – 2026

Bucket List Travel Destinations

Every traveler has that one place on their bucket list - the destination that feels almost too beautiful to be real. This year, we're bringing that dream to life with flower arrangements inspired by the world's most breathtaking travel destinations. From lush tropical escapes to charming European destinations, each display transforms blooms into a journey. It's a passport to beauty, adventure and inspiration, all in full bloom.

Prizes: 1st 2nd 3rd
\$10 \$8 \$5

Adult Categories:

1. **Iceland:** *The Northern Lights* - create an arrangement that captures the magical movement and color of the glowing night sky using flowers in vibrant shades of green, purple, pink and blue. No accessories permitted.
2. **Paris, France:** *The Eiffel Tower* - We invite you to create a 24" tall x 12" wide floral design that reflects the elegance and structure of the famous landmark through shape, height and floral selection. No accessories permitted.
3. **Hawaii:** Create a floral arrangement inspired by a Hawaiian travel destination! Think about the colors, flowers and natural beauty that make Hawaii so unforgettable - lush tropical blooms, vibrant foliage, island landscapes, beaches, volcanoes, or the spirit of aloha. Accessories permitted.
4. **London, England:** Design a floral arrangement inspired by a trip to London! Draw inspiration from the city's iconic landmarks, royal gardens, historic charm or classic British style. Your arrangement might reflect the elegance of London parks, the colors of the Union Jack, or the character of famous sights around the city. Accessories permitted.
5. **Santorini, Greece:** Create a design that features white blooms that echo the island's famous whitewashed buildings, paired with rich blue flowers representing the deep blue domes and the sparkling waters of the Aegean Sea. No accessories permitted.
6. **Japan:** Create a floral arrangement that draws from the country's natural beauty, seasonal blooms, and sense of balance and simplicity. Your design might be inspired by cherry blossom season, peaceful gardens, traditional aesthetics, or a memorable place you've visited or dream of visiting. Accessories permitted.

Special Award given in memory of E. Lea Marsh and Sylvia Marsh for Best of Show in Arrangement Categories to be distributed as follows:

Class I-4 1st Place \$125
2nd Place \$55
3rd Place \$40

Class I-3 Six awards of \$20 each
Class I-5 One award of \$10

CLASS I-4 Floriculture Feature –

We're inviting designers to create an arrangement inspired by their own bucket list travel destination. Your piece could capture the spirit of a place you've always dreamed of visiting - anything from a tropical island or a famous city to a natural wonder. Feel free to interpret the destination creatively through color, texture, flowers, and any design elements that help tell the story of the location. We'd love to see how you bring that destination to life through flowers! Space to be filled is 22" x 22". Use of an overlay on the backboard is encouraged. Minimal accessories are permitted; the emphasis should be on the floral material.

Three cash prizes and rosettes will be awarded:

Prizes:	1st	2nd	3rd
	\$15	\$13	\$10

A listing of flowers and materials used must accompany arrangement.

Class I-5 – 2026 Junior Division

PLEASE PUT AGE ON YOUR ENTRY CARD

A. Single Flower Specimens - up to age 14.

We ask that the specimens are grown by the exhibitor

Prizes:	1st	2nd	3rd
	\$3	\$2	\$1

Marigold, Sunflower, Zinnia, Cosmos, Any other variety awarded.

B. Arrangements – One Best of Show Rosette for each age group. List flowers and materials used. We ask that the exhibit be made by the exhibitor.

Prizes:	1st	2nd	3rd
	\$8	\$5	\$3

Up to age 14

1. We ask you to create a floral arrangement inspired by your bucket-list travel destination - a place you dream of visiting someday. It could be a sunny beach, a famous city, a mountain adventure, or anywhere in the world you'd love to explore. Use flowers, colors, and fun decorations to show what makes that place special.
2. Design a fun floral arrangement inspired by a trip to an imaginary (a magical garden, a candy-colored island, a city in the clouds) or fictional (Hogwarts, Narnia, Oz, the Shire) place or anywhere your imagination takes you! Use flowers, colors and creative decorations to show what your dream destination looks like.

CLASS J – Canned Goods and Farm Products

Superintendent: Joyce Berardis

Mail pre-registration forms to Joyce Berardis, 43 Pinewood Trail, Deep River, CT 06417

Registration & Entries to arrive Thursday, August 27, 2026

Any exhibit must have been made by the person exhibiting it since August 31, 2025. **Date and label the contents.**

All entries will be judged on visual quality of the contents, choice of jar, and neatness of packing. Only jars for collections may be decorated.

All canned fruits, vegetables, etc. must be in standard quart or pint jars. Jellies must be in standard sealed glasses. (No cloth or fancy covers on canned goods except in collections.) Any worthy entry other than those listed may be awarded premiums at the discretion of the judges.

Canned Goods

Rosette for Best in Senior Division - **Jars will be opened for judging.**

Prizes: 1st 2nd 3rd
\$ 4 \$3 \$2

1. Fruits, Catsup, Chili, etc.
2. Pickle, Oils, Vinegars, etc.
3. Vegetables, Jams and Conserves

Special award given by the Swadosh Family in memory of Patricia M. Swadosh for Best in Show in canning. This \$100 prize is open to both adults and youth.

Collections

Collections will not be opened

Prizes: 1st 2nd 3rd
\$8 \$6 \$4

1. Canned Fruit (not less than 6 varieties)
2. Pickles (not less than 6 varieties)
3. Jams and Conserves (not less than 6 varieties)
4. Vegetables (not less than 6 varieties)
5. Jellies (not less than 6 varieties)
6. Oils and Vinegars (not less than 6 varieties)

BEST DOZEN EGGS IN EGG CARTON. Eggs to be judged for uniformity of size, shape, and color.

Prizes: 1st 2nd 3rd
\$4 \$3 \$2

Farm Products

Prizes: 1st 2nd 3rd
\$4 \$3 \$2

1. Maple Syrup
2. Comb Honey
3. Strained Honey - Light
4. Strained Honey - Dark

JUNIOR DIVISION – Canned Goods and Farm Products

Up to and including 17 years old

Rosette for Best in Junior Division

Prizes: 1st 2nd 3rd
\$4 \$3 \$2

- *Canned Goods, any variety Collection - Canned Goods (3 max.)
*Jellies, Jams or Conserve Collection - Jelly, Jam or Conserve (3 max.)
**Jars will be opened for judging*

CLASS K – Cookery

Superintendent: Michele St.Marie

Telephone: 860-685-1148 gomstmarie1@gmail.com

Individuals who have won previously should not submit the same recipe. One entry per person in each category. Limit to 4 entries per person. No prepared mixes may be used.

Registration & Entries to arrive Thursday, August 27, 2026

Rosettes for:

Superintendent Award • Judges Award • Best of Show Award

SENIOR COOKING ages 15 and over

Prizes: 1st 2nd 3rd
\$4 \$3 \$2

1. Pie - Any Variety
2. Cookies Any Variety (Plate of 6)
3. Cake - Any Variety
4. Decorated Cake
5. Bars, any kind, Plate of 6
6. Quick Breads
7. Yeast Breads
8. Muffins - Plate of 6
9. Rolls, Plate of 6

Judging will be based on appearance, flavor and texture.

Peach Pie Baking Contest

Just in time for peach season! Make us your best peach pie and enter on a disposable dish. Contestants must provide recipe on 3x5 index card.

Judging criteria: Overall Appearance 40; Flavor 40; Crust 10; Texture 10

Special Award given in memory of E. Lea Marsh and Sylvia Marsh ... \$200

JUNIOR COOKERY ages 7 to 15, as of July 1st

Prizes: 1st 2nd 3rd
 \$3 \$2 \$1

1. Plate of Three Baking Powder Biscuits
2. Plate of Three Muffins
3. 10" Pie, any kind
4. Plate of Three Rolled Cookies
5. Decorated Cake
6. Cake, Any Variety
7. Loaf of Quick Bread or Cake
8. Plate of Three Dropped Cookies
9. Candy, Six Pieces
10. Brownies, Plate of 3

King Arthur Flour Baking Contests

This year's senior and youth contest recipes are adapted from desserts served around the time of the Revolution.

Open to adults ages 15 and up

King Arthur Senior Baking Contest

Washington Cake

Makes 1 cake

Please enter on a disposable plate.

Exhibitor must bring the opened bag of King Arthur Flour or submit a UPC label from the flour bag when he/she submits the entry.



Adult Prizes:

First place \$75 gift card
Second place \$50 gift card
Third place \$25 gift card

INGREDIENTS

2 sticks (1 cup) butter, softened	1 teaspoon baking soda
1 cup sugar	1 teaspoon grated nutmeg
5 eggs	1 cup raisins
1 teaspoon lemon extract	1 cup dried currants
4 cups King Arthur Unbleached All Purpose Flour	1 cup milk or cream
1 teaspoon salt	¼ cup brandy

INSTRUCTIONS

1. Preheat oven to 350°F. Grease and flour a 9- to 10-inch Bundt pan.
2. Cream the butter and sugar in a bowl until light, pale color, about 1-2 minutes. Add the eggs one at a time, continuing to beat until well mixed, then add the lemon extract.
3. Sift the flour with the salt, baking soda and nutmeg in a separate bowl, then stir in the dried fruit. Gradually add the dry ingredients to the butter, sugar,

and egg mixture, alternating with the milk and brandy. Mix until thoroughly combined.

4. Pour batter into the Bundt pan. Place on the oven's center rack and bake for about 60 minutes or until a toothpick inserted in the center comes out clean. Place pan on a wire rack to cool, about 30 minutes, then place another wire rack over the base of the cake and invert the pan to release the cake. You may need to run a knife along the pan edges and/or tap the sides.
5. When cool, sprinkle with confectioners' sugar.

King Arthur Youth Baking Contest **Soft Ginger Molasses Cookies with Ginger Syrup**

Yields about 3 1/2 dozen palm-size (about 3") cookies

Open to Juniors ages 7 to 15

Please enter 3 cookies on a disposable plate.

Exhibitor must bring the opened bag of King Arthur Flour or submit a UPC label from the flour bag when they submit the entry.

Youth Prizes:

First place	\$40 gift card
Second place	\$25 gift card
Third place	\$25 gift card



16 tablespoons (2 sticks) unsalted butter, room temperature
1 cup granulated sugar
1/4 cup molasses
1/4 cup ginger syrup*
2 1/4 teaspoons baking soda
1 1/4 teaspoons ground cinnamon

1 1/4 teaspoons ground cloves or ground allspice
1 teaspoon ground ginger
2 large eggs
3 1/2 cups King Arthur Unbleached All-Purpose Flour

INGREDIENTS

Additional granulated sugar, Swedish pearl sugar, or coarse sparkling sugar, for coating.

* Ginger syrup can be replaced with an additional 1/4 cup of molasses.

INSTRUCTIONS

1. Preheat the oven to 350°F. Lightly grease (or line with parchment) two baking sheets.
2. In a large mixing bowl, cream together the butter and sugar until mixture is light and fluffy.
3. Beat in the molasses, ginger syrup, baking soda, salt, and spices. Add the eggs, beating well and scraping down the sides of the bowl to make sure everything is incorporated.

4. Stir in the flour.
5. Scoop the soft dough into 1 1/2" balls (a tablespoon cookie scoop works well here).
6. Roll cookies in granulated sugar, coarse sugar, or pearl sugar
7. Space the cookies on the prepared baking sheets, leaving about 2 1/2" between them.
8. Bake the ginger cookies for 10 minutes. The centers will look soft and puffy; that's OK.
9. Remove the cookies from the oven, and cool them on the pan for 10 minutes before transferring them to a rack to cool completely.



CLASS L ~ Needlework

Superintendent: Rob Miceli
Email: ert14m@sbcglobal.net

Registration & Entries to arrive Thursday, August 27, 2026

All items should be clean and in like new condition. Articles entered in this class must be listed in one of the following groups. No article may compete in more than one group. If the article recently was in this class, it should not be reentered. Judging on Danish System. The Danish system of judging is used whereby each entry is judged on its own merit.

Juniors Division: Age 16-19

Senior Division Age 20 and over

Prizes: 1st 2nd 3rd
\$5 \$3 \$2

Superintendents Award and Judges Rosettes will be awarded

GROUP I –Knitted or Crocheted Work, plain and patterned

Afghan

Sweaters

Hats

Mittens

GROUP II – Sewing

Dresses

Pants

Adult

Costume

Children

Rugs

2 Piece Suit

Jacket

GROUP III

Counted Cross Stitch – Original Design

Counted Cross Stitch – Kit

Needlepoint – Original Design

Needlepoint – Kit

Crewel – Original

Crewel Embroidery – Kit

Embroidery

**Special Needlework Award
in Memory of E.Lea Marsh and Sylvia Marsh**

Needlepoint/Cross Stitch: Original Design: \$75

Sewing: \$50

Crochet only (no Afghans): \$25

GROUP IV – Hooked Articles

Rugs - Original Design or Kit

Pillows - Original Design

Pillows - Kit

Wall Hangings - Original Design

Wall Hanging - Kit

GROUP V – Quilts

Hand Appliquéd

Machine Appliquéd

Hand Pieced

Machine Pieced

GROUP VI – Miscellaneous/Combination Items

Miscellaneous-Combinations Items

SPECIAL QUILTING AWARD in Memory of Ruth Adams
\$25 prize to a novice or first-time quilter
(Given by Ruth's family)



CLASS P – Photography

Superintendent: Ray Oakes oakeshome@sbcglobal.net
(For State Photo Contest, visit www.CTAGFairs.org)

CONTEST CATEGORIES

Division I – Salon

P1 - Salon

For expert amateurs and semi-professionals. Entrants in this division may enter 5 photographs of any subject. Division I entrants cannot enter any other division.

Division II- Enthusiasts

For any amateur photographer

P2 - Black and White

P3 - Birds

P4 - Pets

P5 - People

P6 - Wildlife(excluding birds)

P7 - General Interest

P8 - Flowers & Plants

P9 - Landscapes and Seascapes

P10 - 2026 Theme- TRANSPORTATION

P11 - Chester Fair Photos



Division III- Youth

P12 - Ages up to 12

P13 - Ages 13-16

Category Prizes: 1st-\$12 & ribbon; 2nd-\$7 & ribbon; 3rd-\$5 & ribbon

Exhibit Prizes: Best of Show-Division 1-Salon, \$25 + Rosette;

Best of Show: \$25 + rosette.

Prizes will be distributed by the Photo Superintendent in the Exhibit Area at the close of the Fair. The Superintendent may limit awards in categories with less than 10 entries.

Special Sponsor Awards:

Achievement Award - \$25 & rosette. Awarded by **Joseph's Photography of Chester Ken and Judy Kells Youth Photo Award** - \$25 & Rosette.

Pre-registration is strongly encouraged and requests must be received by August 17th. All pre-registrants will be mailed a registration packet including instructions, exhibitor tags and a registration form. Email Ray Oakes, oakeshome@sbcglobal.net with all requests. If registering in person, forms may be found in the fair book or printed from the quick link on the fair website www.chesterfair.org.

CONTEST RULES

GENERAL

1. Entries are judged on interest, impact, composition and technical skills.
2. No professional photographers may enter. For professional definition see Fair Rules and Regulations, #20.
3. **Photo entries must have been taken within the last year.**
4. The photographer's name, phone number, contest category and photo title must appear on the back of each entry.
5. **All entries must be matted.** Frames and glass mounts are not allowed.
6. The superintendent may limit awards in categories with less than 10 entries.

ADULTS

1. Minimum entry **image size** is 5"x 7".
2. Maximum entry **size with mat** is 18"x 24" Any matted photograph **exceeding** 18"x 24" will not be accepted.
3. Division I- Maximum of 5 prints may be entered per adult photographer.
4. Division II- Maximum of 10 prints may be entered per adult photographer, maximum of 2 prints per category.

YOUTH

1. Minimum entry image **size with mat** is 5"x7".
2. Maximum entry image **size with mat** is 16"x20"
3. Division III- Maximum of 4 prints may be entered per youth photographer in P12(ages up to 12) or P13(ages 13-16)
4. If a youth aged photographer chooses to be judged in an adult category, use the rules and categories for adults, not P12 or P13.

REGISTRATION

1. **Pre-registration is strongly encouraged.** Print a registration sheet from chesterfair.org, then mail a completed form to Ray Oakes, 23 Jones Lane, Deep River, CT 06417 or email oakeshome@sbcglobal.net. Entrants pre-registering by August 14th will be mailed entry tags to facilitate the registration process.
2. All photo entries must be delivered and registered at the Fairgrounds on Thursday, August 27, 2026. Registration will be held from 6-8:30 p.m.
3. If personal registration is not possible on August 27, call 860-526-3650 to make arrangements for prior delivery.

ENTRY PICK UP

1. All entries are considered part of the exhibit and may not be picked up until the close of the Fair on Sunday evening.
2. If unable to pick up entries on Sunday evening, the photographer is responsible to make other arrangements with the Superintendent. All unclaimed entries will be discarded in seven days.

CLASS Q – Antique Tractor Pull

FRIDAY AND SATURDAY NIGHTS

SAFETY RULES AND ELIGIBILITY

Fair admission is only given to 1 driver and 1 crew member. (16 and 17 year old operators may participate but MUST be accompanied by a parent to be eligible.)

1. Operators must be 18 years of age.
2. Consumption of alcohol or illegal drugs is strictly prohibited. Any driver or helper found to be in violation of this rule while participating at an event will be disqualified.
3. **Owners, operators and tractors are entered at their own risk. Only one person, the operator of the tractor is to be on the tractor when it is in motion on the track or anywhere else on the fairgrounds. Absolutely no riders are permitted at any time.**
4. **Friday rule change: 3.5 mph for uncut tires; 6 mph classes will allow full cut tires. Uncut tires can run in cut tire classes, but cut tires can not run in uncut classes.**
5. Hitch height may be no greater than 20 inches from the ground with a 3.75x3 inch opening. All tractors must have wheelie bars 10" from ground.
6. Tractor must have a functioning governor at all times as determined by a ten second wide open no load test.
7. All tractors must be registered and weighed within one hour after the event start time.
8. Every tractor with driver must be weighed at time of registration.
9. Limit one tractor and one driver per weight class.
10. Driver must remain seated while pulling.
11. There must be a minimum of 2 tractors per class in order for that class to be run.
12. Two hooks will be standard, except on Friday's competition. However, under time constraint only one hook will be allowed. This will be announced at the start of the event.
13. No jerking the chain (for your safety) and please no digging holes (it takes time to fill.)
14. Every tractor must be weighed with the driver on board immediately following that tractor's final pull of the class. At this time, if the tractor is found to be overweight, the tractor will be disqualified from that class.
15. Hitch height is measured at final weigh in. If a tractor is found to be in violation of this rule, the tractor will be disqualified from that class.
16. Hook-up man is not to approach tractor until driver has tractor in neutral and has raised his hands.

17. Tractor tires must remain within boundaries of the track. If the boundaries are exceeded as determined by the pit crew, the measurement will be taken at the cross of the line. No second hook will be allowed at this point.
18. Driver order will be assigned prior to the start of the class. All drivers must abide by this order. If a driver pulls out of order, that pull will not count and the driver must pull again in the correct order. The only exception to this rule is a legitimate mechanical breakdown. To be determined by the pit boss.
19. **Each class enters and leaves the ring together as a group!** Tractors must return to their assigned spots in the staging area after pulling during the class in which they are entered until all tractors are finished pulling in that class. Only tractors in such class are allowed in the ring. Others will wait in a designated staging area!!!
20. After any partial pull of more than one foot, the boat will be pulled in the same direction to the end of the track by a pull back tractor. Therefore each tractor will be pulling in the opposite direction.
21. Track will be groomed between classes only.
22. The track official or event organizer will make all final judgment calls.
23. **Any unsportsmanlike conduct will result in immediate ejection from the fairgrounds. Decisions made in this regard by Fair Directors are FINAL!**

Classes: Tractor Weights include the driver

Note: Friday night classes are 3.5 mph and 6 mph each weight

Friday: 3000 lbs. and under	Saturday: 2500 lbs. and under
3500 lbs. and under	3500 lbs. and under
4000 lbs. and under	4500 lbs. and under
4500 lbs. and under	5500 lbs. and under
5000 lbs. and under	6500 lbs. and under
5500 lbs. and under	7500 lbs. and under
6000 lbs. and under	8500 lbs. and under
6500 lbs. and under	

RULES AND REGULATIONS

The State of Connecticut Department of Agriculture has made SEVERAL changes to the 2026 Connecticut Fair and Show Requirements. Exhibitors will be responsible for educating themselves about these changes and following the recommendations. Any animal found to not be in compliance with the requirements to be required to be removed from the fairgrounds. The 2026 Connecticut Fair and Show regulations can be found on the CT Department of Agriculture website: Connecticut Department of Agriculture https://portal.ct.gov/doag/regulatory/regulatory/state-veterinarian?language=en_US

Fairgoers enter at their own risk. Special attention on the part of the attending exhibitors is called to all rules given below. It is the endeavor of the Fair Society to keep dishonest or questionable devices off the Fair Grounds. Please cooperate with the Directors by reporting the presence of any such device to the Fair Officials.

Not Responsible for typographical errors.

1. Competition at the fair will be open to all persons upon the purchase of an admission ticket or upon application to the Secretary.
2. The Superintendent will receive entries for Classes: E, F, G, H, I, J, K, L, and P only on Thursday, the 27th, 6:00 p.m. - 8:30 p.m., only animals on Friday the 28th, 6:00 p.m. - 9:00 p.m. at the Fair Grounds. No entries will be accepted Saturday morning. All entries must be listed on the entry blanks furnished by the Society. Entries coming by mail must be in the Superintendent's hands before 6:00 p.m. on Wednesday before the fair. Early entries help to avoid the last minute rush.
3. **ALL LIVESTOCK ENTRIES MUST BE MAILED TO CHESTER FAIR P.O. BOX 646 CHESTER, CT 06412 POSTMARKED AFTER JULY 15TH, 2026.**
4. All animals, except Drawing Contests, must be within the Fair Grounds by 9:00 p.m. Friday. **Classes E, F, G, H, I, J, K L and P will be accepted at the fair grounds.**
5. All Articles and Animals must be owned by the exhibitor. When there is no competition the withholding of premiums will be at the discretion of the Judges.
6. All Animals and Poultry entered for competition must have been owned by the person entering them on or before August 1, 2026. ALL SPECIES: Animals shall originate from herds or flocks that meet the testing and health requirements of the state of Connecticut. State livestock inspectors may request proof of compliance with state requirements. All animals and poultry must have permanent identification (ear tag, tattoo, leg band, microchip plus a reader or EIA certificate). Recently imported animals must have met the health and testing requirements for entry into Connecticut. No herd or flock under quarantine order shall move or be exhibited.
7. All animals and poultry entered at fairs and shows must be in good health and in proper physical condition and will be examined at the exhibition by the barn superintendent. Evidence of poor condition or infectious or contagious disease or failure to produce the necessary documents for health certification, vaccination or testing will result in ejection. The Connecticut Department of Agriculture Livestock Inspector's decision is final.
8. Any member of a committee who shall own or have an interest in any article submitted for decision of said committee shall withdraw from such committee.
9. Should any person enter an animal in any other name than that of its bona fide owner, the person making such an entry shall not be allowed a premium, should one be reported by the Judges.
10. All exhibits shall be under the control and direction of the Association but

solely at the risk of the exhibitor. The Association will not be responsible for damage, injury, loss or theft of or to any exhibit, irrespective of the cause of such damage, injury, loss or theft. Each exhibitor will be solely responsible for any loss, injury or damage done to, occasioned by or arising from, any animal or articles exhibited by him, and shall, indemnify the Association against all legal or other proceedings in regard thereto.

11. Any exhibitor may appeal from the decision of the Judges to the Board of Directors within one week following the close of the fair.
- 12. If the receipts are not sufficient to pay the premiums they shall be subject to a pro rata reduction.**
13. It shall be the duty of the superintendents of the several classes to arrange the exhibits so that all articles or animals of the same grade or kind shall be placed together as much as possible, and also to see that all articles or animals in their respective classes are viewed by the Judges.
14. No person shall be entitled to a premium unless complying with the quantity specified in the several classes. It shall be the duty of the superintendent to see that this rule is enforced. Variety must be stated on each exhibit or it will be disqualified.
15. Collection exhibits cannot compete for single premiums, nor can single exhibits compete for collection premiums unless otherwise specified.
NOTE: Goats, cattle and sheep are exempted from this rule and may compete as a herd and also as individuals.
16. All owners of registered stock must produce their certificate of registration before the Judge passes on the entry.
- 17. Premiums will not be paid on dairy and beef removed from the exhibition before 4:30 p.m. Sheep, Goats, and Swine before 5:00 p.m. Rabbits and Poultry before 5:30 p.m. or articles removed before 6:00 p.m. Sunday, unless such removal has the special approval of the President or Superintendent. No vehicles on the grounds before 7 p.m. on Sunday.**
- 18. Premiums will be paid only between 6:00 and 7:00 p.m. on Sunday evening. No premiums will be mailed.**
19. In the event that a class is not held, the Superintendent has the right to distribute premiums at his/her discretion.
20. Professionals in Photography, Bakery, Arts, Crafts, Needlework, Vegetables and Floriculture cannot exhibit in the division that provides their primary source of income.
- 21. Only animals registered and exhibited at the fair will be permitted on the grounds.**
22. Age for Senior Citizen discount is 65.
23. Emergency Order concerning Rabies can be found on the website.

NO PETS ALLOWED.

No Entry Fees Are Charged Unless Otherwise Noted

Exhibitors are encouraged to email or mail their entry lists as early as possible. By doing so, exhibitors will not have to wait for their entry tags at the fair grounds on Thursday night.

This will make it much easier for everyone concerned

ENTRY BLANKS ON PAGES 49, 50 and 51

www.chesterfair.org

Early Registration of entries eliminates waiting when arriving at the fairgrounds.

ATTENTION!

Please read the following instructions before completing entry form.

Articles may be entered on plain paper if additional forms are necessary.

List classes separately indicating Junior or Senior Division.

Send entry forms to the following superintendents:

Class A-1: Cattle, Dairy and Class A-2: Cattle, Beef	Beth DeRosa Linsley Chester Fair P.O. Box 646 Chester, CT 06412
Class C-1 Sheep	Alison Trojanowski Chester Fair P.O. Box 646 Chester, CT 06412
Class C2: Goats	Ashley Best Chester Fair P.O. Box 646 Chester, CT 06412
C-3: Swine	Ashley Trojanowski Chester Fair P.O. Box 646 Chester, CT 06412
Class D-1: Poultry	Jake Cook Chester Fair P.O. Box 646 Chester, CT 06412
Class D-2: Rabbits	Amy Wiknik Chester Fair P.O. Box 646 Chester, CT 06412
Class E, F, G: Pomology, Vegetable Arrangements and Vegetables	Sarah Pike 35 Hoop Pole Hill Rd., Chester, CT 06412
Class H: Hobbies	Paulette Heft 22 Butter Jones Rd., Chester, CT 06412
Class I: Floriculture	Annie Burton 16 Dock Road, Chester, CT 06412
Class J: Canned Goods	Cathy Malcarne 108 Bahr Road, Deep River, CT 06417
Class K: Cookery	Michele St. Marie 2 Wickapecko Dr., Ocean, NJ 07712
Class L: Needlework	Rob Miceli PO Box 114, Chester, CT 06412
Class N: Now part of Class H above	
Class P: Photography	Ray Oakes 23 Jones Lane, Deep River, CT 06417

Registration entry tags for Classes E, F, G, H, I, J, K, and P are available from the superintendent of those divisions in their respective buildings on Thursday, August 21st, 6:00–8:30 p.m. Dairy and Beef may be removed after 4:30 p.m., Sheep, Goats, Swine 5:00 p.m., Rabbits and Poultry after 5:30 p.m. Sunday. All other exhibit articles CANNOT BE REMOVED BEFORE 6:00 p.m. **NO VEHICLES ON GROUNDS BEFORE 7 P.M.**

BOARD OF DIRECTORS

President..... Timothy Comstock
 Executive Vice President..... Linda Zanelli
 2nd Vice President..... Michelle St. Marie
 Secretary..... Ashley Ivanac
 Assistant Secretary..... Shirley Hayward
 Treasurer..... Charlene Janacek
 Asst. Treasurer..... Rob Miceli

Joe Calamari	Nancy McGee	Edith Rochette
Jeff Carlson	Sarah Pike	Gary Stevens
Jake Cook	Hedwig Porto	Walter Zanelli
Cathy Malcarne	Kim Price	

Honorary Directors

Brian Buckley	Jill Jones	Ellen Squier
Anne Burton	Linda Jones	Eileen Steinfeldt
John Dube	Jenny Kitsen	Chuck Surgalis
Josh Hoadley	Frank Kucharski	
Skip Hubbard	Ruth Naples	

Fair Superintendents

Antiques..... Julie Nash, Gary Nash	Grounds & Buildings..... Jeff Carlson,
Beverages..... Lou Desjardins	Linda Zanelli, Kevin Mikkelson
Canned Goods & Dairy Products..... Joyce Berardis	Hobbies..... Paulette Heft
Family Entertainment..... Julie Nash,	Livestock Pulls..... Marc D’Orvilliers
Nancy McGee	Needlework..... Rob Miceli
Concessions..... Amber Newcomer,	Off Season Rentals..... Nancy McGee
Rob Miceli, Michelle St. Marie	Parking..... Kevin Mikkelson
Cookery..... Michelle St. Marie	Photography..... Ray Oakes
Dairy Cattle & Beef... Beth DeRosa Linsley,	Pomology & Horticulture..... Sarah Pike
Colleen Augur	Poultry..... Jake Cook,
Electrician..... Bob Burton	Hedwig Porto
Main Stage	Premiums..... Laurie Hurlburt
Entertainment..... Michelle St. Marie	Publicity..... Linda Zanelli
Fair Book..... Nancy McGee,	Rabbits..... Amy Wiknik
Kim Price	Ribbons/Trophies.... Sarah Pike, Ashley Ivanac
Data & Communication	Scholarship..... Shirley Hayward
Technology Management..... Gary Stevens	Sheep..... Allison Trojanowski
Floriculture..... Annie Burton,	Souvenirs..... Amber Bosco
Evelyn McKenna	Swine..... Allison Trojanowski
Gates/Tickets..... Michele St. Marie,	Tractors..... Joe Calamari
Nina Sulinski, Charlene Janacek	Webmaster..... Denis Recchia
Goats..... Ashley Best, Lindsey Best	Zero Waste..... Kim Price



The 2026 Chester Fair
P.O. Box 646
Chester, CT 06412

